

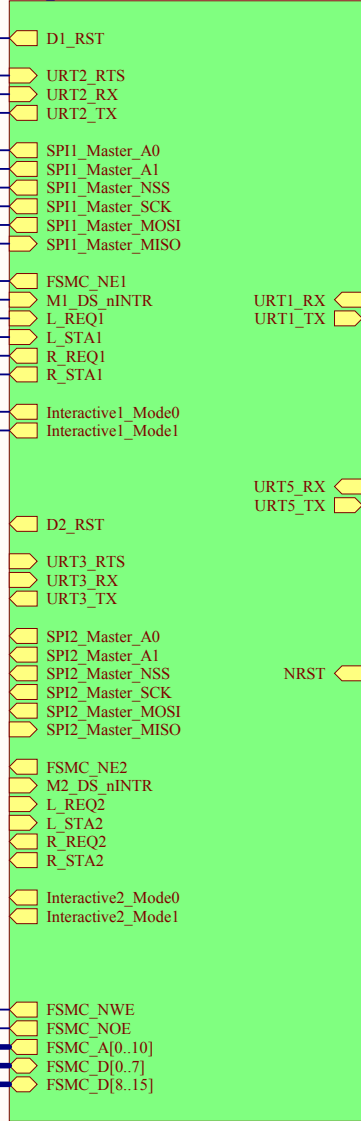
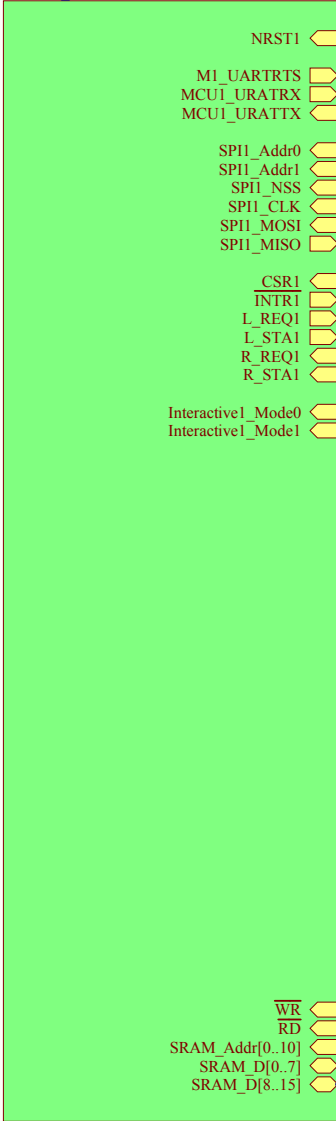
U\_Interface\_Board  
Interface\_Board.SchDoc

U\_MCU\_Board  
MCU\_Board.SchDoc

U\_MCU\_Test\_UART  
MCU\_Test\_UART.SchDoc

U\_Inout\_Interface  
Inout\_Interface.SchDoc

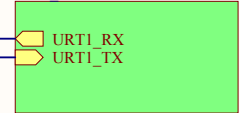
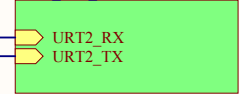
U\_Power  
Power.SchDoc



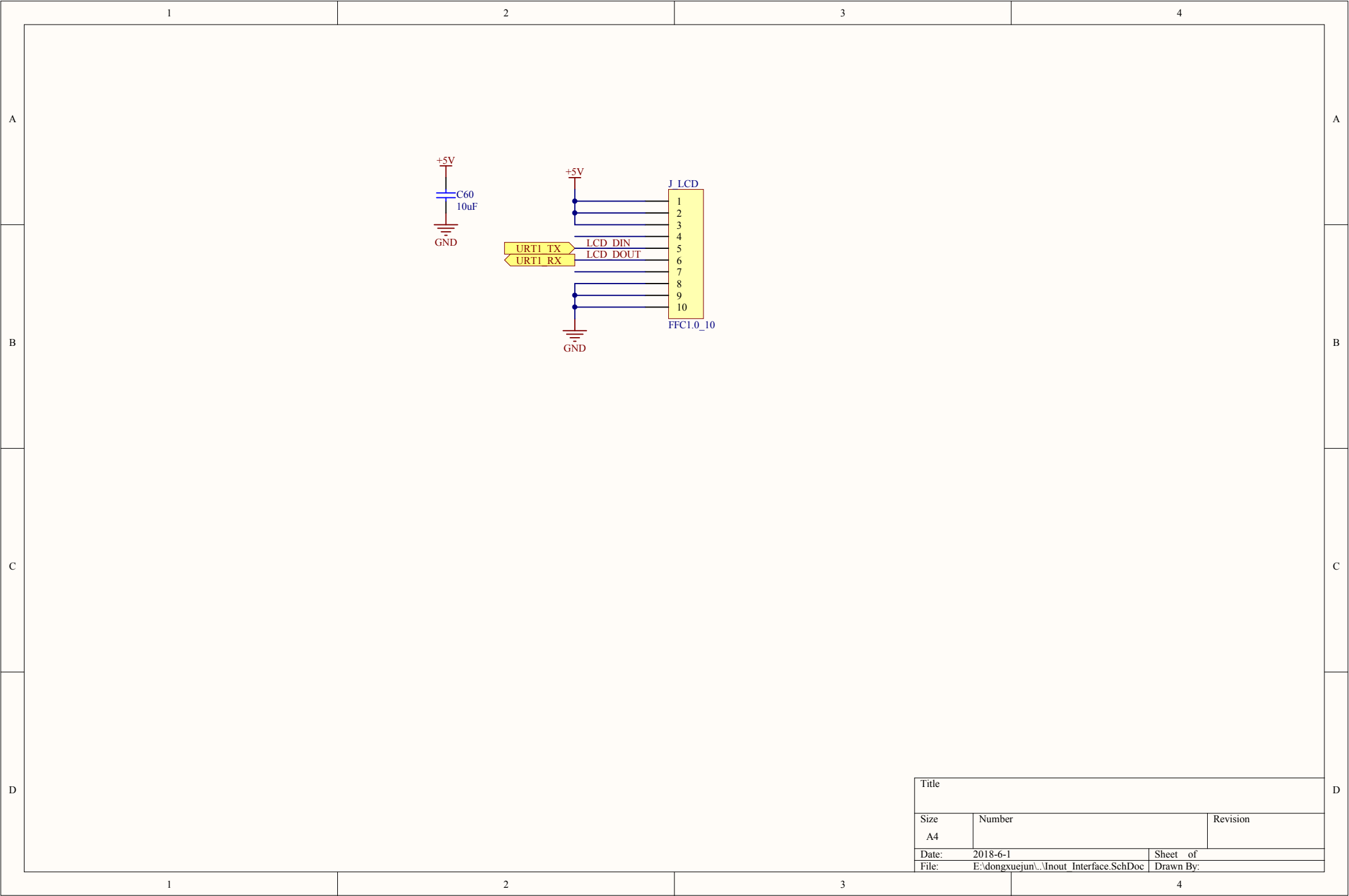
URT1\_RX  
URT1\_TX

URT5\_RX  
URT5\_TX

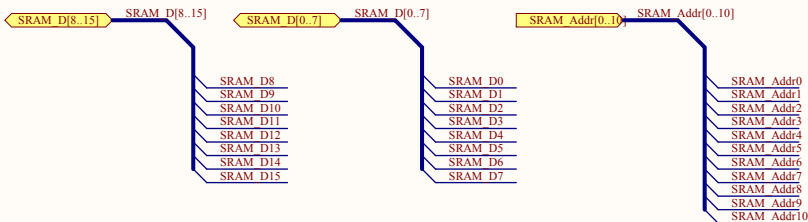
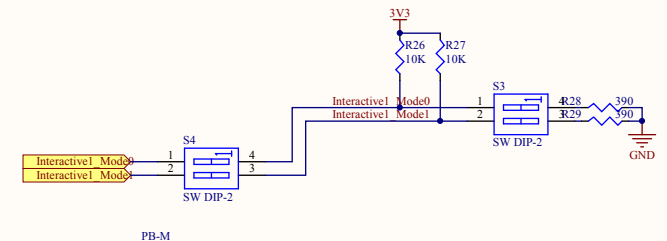
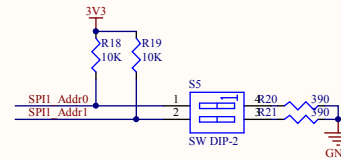
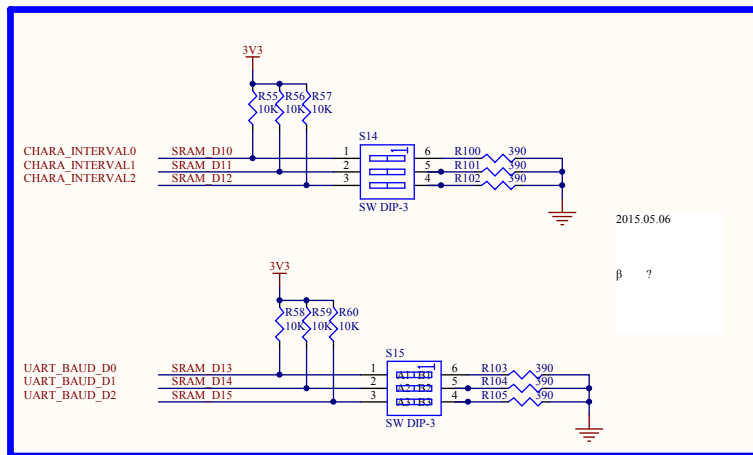
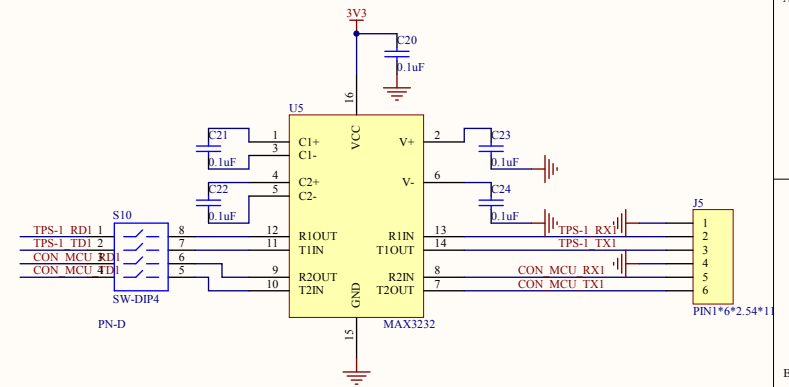
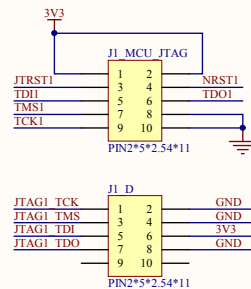
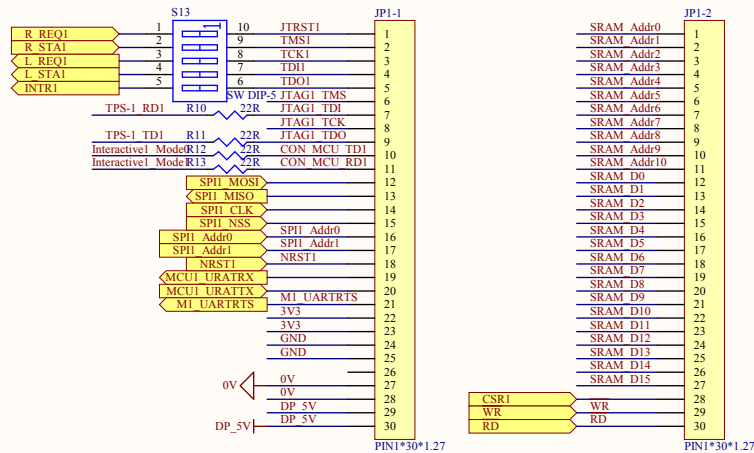
NRST



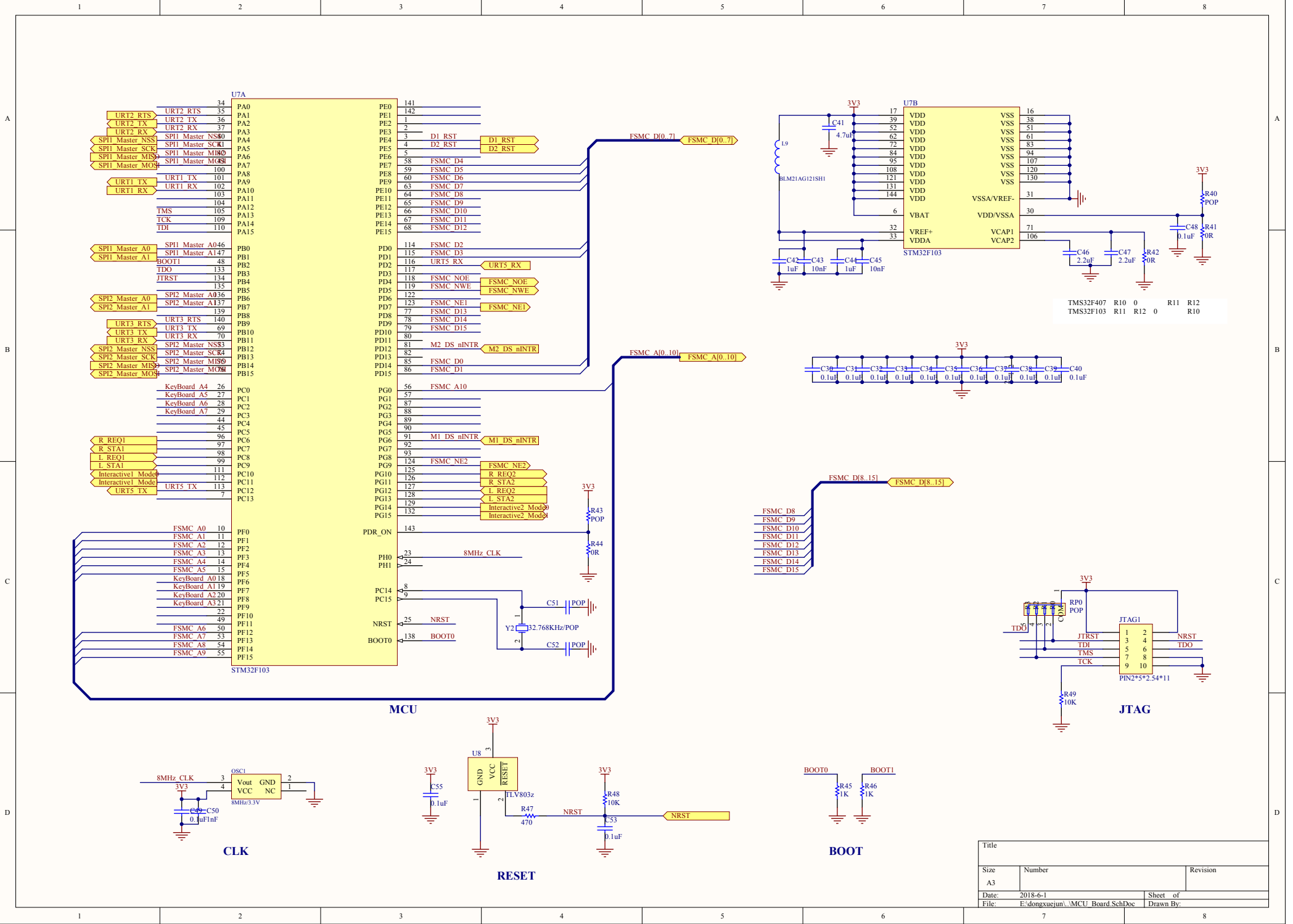
Title		
Size	Number	Revision
A4		
Date:	2018-6-1	Sheet of
File:	E:\dongxuejun\.\Evaluation_Board.SchDoc	



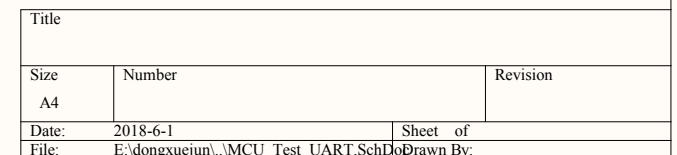
Title		
Size	Number	Revision
A4		
Date:	2018-6-1	Sheet of
File:	E:\dongxuejun\...\nout_Interface.SchDoc	Drawn By:

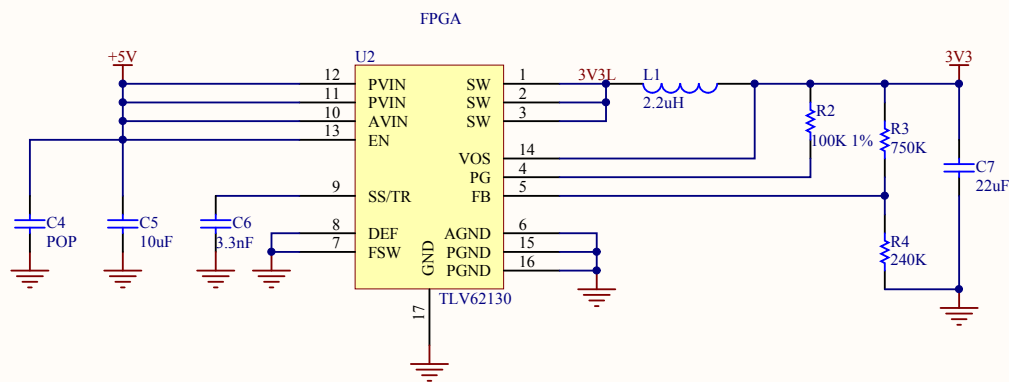
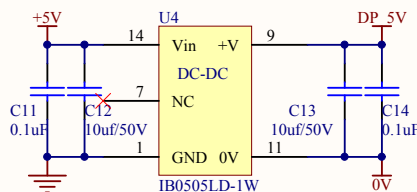
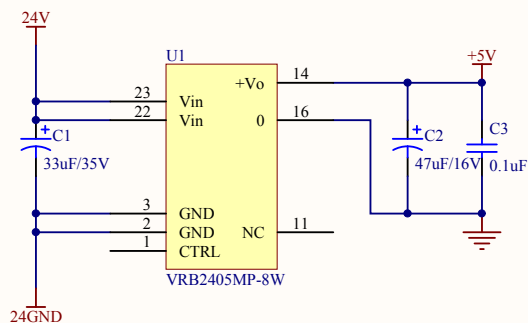
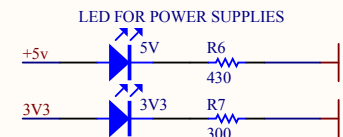
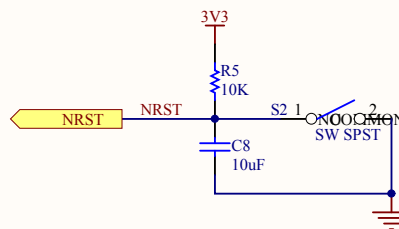
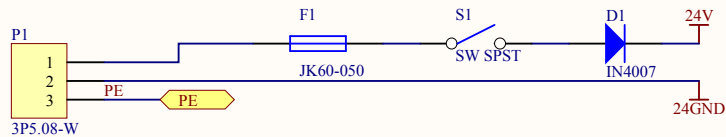


Title		
Size	Number	Revision
A3		
Date:	2018-6-1	Sheet of
File:	E:\dongxuejun\Interface Board.SchDoc Drawn By	

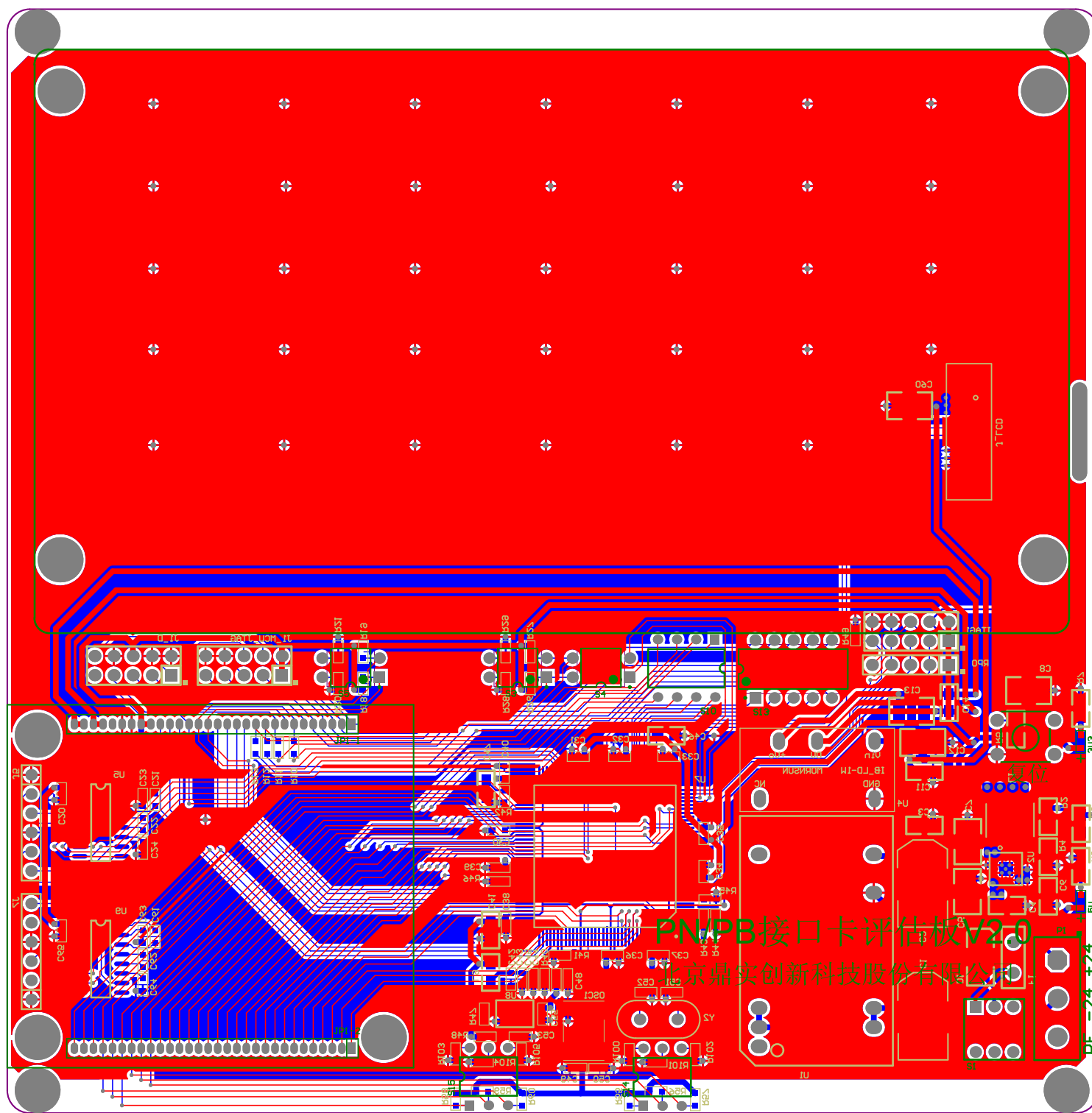


Title		
Size	Number	Revision
A3		
Date:	2018-6-1	Sheet of
File:	E:\dongxuejun\MCU Board SchDoc	Drawn By





Title		
Size	Number	Revision
A4		
Date:	2018-6-1	Sheet of
File:	E:\dongxuejun\...\Power.SchDoc	Drawn By:



Comment	Description	Designator	Footprint	LibRef	Quantity
G		3V3, 5V	0603	LED_S	2
33uF/35V	Polarized Capacitor (Radial)	C1	7243	Cap Pol1	1
47uF/16V	Polarized Capacitor (Radial)	C2	7243	Cap Pol1	1
0.1uF	Capacitor	C3, C11, C14	0805	Cap	3
POP	Capacitor	C4	0805	Cap	1
10uF	Capacitor	C5, C8, C60	1210	Cap	3
3.3nF	Capacitor	C6	0805	Cap	1
22uF	Capacitor	C7	1210	Cap	1
10uf/50V	Capacitor	C12, C13	1210	CAP	2
0.1uF	Capacitor	C20, C21, C22, C23, C24, C30, C31, C32, C33, C34, C35, C36, C37, C38, C39, C40, C48, C49, C53, C55, C61, C62, C63, C64, C65	0603	CAP	25
4.7uF	Capacitor	C41	0805	Cap	1
1uF	Capacitor	C42, C44	0603	Cap	2
10nF	Capacitor	C43, C45	0603	Cap	2
2.2uF	Capacitor	C46, C47	0805	Cap	2
1nF	Capacitor	C50	0603	CAP	1
POP	Capacitor, Resistor	C51, C52, R40, R43	0603	Cap, Res1	4
IN4007	Default Diode	D1	7227	Diode	1
JK60-050	Fuse	F1	YMDZ	FUSE1	1
PIN2*5*2.54*11	Header, 5-Pin, Dual row	J1_D, J1_MCU_JTAG, JTAG1	IDC10	Header 5X2	3
PIN1*6*2.54*11	Header, 6-Pin	J5, J7	SIP0.9-6	Header 6	2
PIN1*30*1.27	Header, 30-Pin	JP1-1, JP1-2	header-30-1.27	Header 30	2
FFC1.0_10	Header, 10-Pin	J_LCD	FFC1.0 - duplicate	Header 10	1
2.2uH		L1	INDP4020	INDUCTOR	1
BLM21AG121SH1	VLCF5028T	L9	0805	INDUCTOR	1
8MHz/3.3V		OSC1	OC2	OSC	1
3P5.08-W	Header, 3-Pin	P1	3PN5.08	Header 3	1
100K 1%	Resistor	R2	0805	Res1	1
750K	Resistor	R3	0805	Res1	1
240K	Resistor	R4	0805	Res1	1
10K	Resistor	R5	0805	Res1	1
430	Resistor	R6	0805	Res1	1
300	Resistor	R7	0805	Res1	1
22R		R10, R11, R12, R13	0603	RES00	4
10K	Resistor	R18, R19, R26, R27, R48, R49, R55, R56, R57, R58, R59, R60	0603	RES00, Res1	12
390		R20, R21, R28, R29, R100, R101, R102, R103, R104, R105	0603	RES00	10
0R	Resistor	R41, R42, R44	0603	Res1	3
1K	Resistor	R45, R46	0603	Res1	2
470	Resistor	R47	0603	Res1	1
POP	Resistor	RP0	SIP-5	5脚排阻	1
SW SPST		S1	KEY8*8ZS	SW SPST	1
SW SPST		S2	KEY6*6	SW SPST	1
SW DIP-2	DIP Switch, 2 Position, SPST	S3, S4, S5	DIP-4	SW DIP-2	3
SW-DIP4	DIP Switch	S10	DIP-8	SW-DIP4	1
SW DIP-5	DIP Sw itch, 5 Position, SPST	S13	DIP-10/D14.5	SW DIP-5	1
SW DIP-3	DIP Switch	S14, S15	DIP-6	SW DIP-3	2
VRB2405MP-8W		U1	VRB2405MP-8W	VRB2405MP-8W	1
TLV62130		U2	QFN-16N	TLV62130	1
IB0505LD-1W		U4	IB_LD-1W	IB0505LD-W75	1
MAX3232		U5, U9	SO-16	MAX3232	2
STM32F103	Cortex-M4 core MCU	U7	TQFP144N	STM32F417	1
TLV803z		U8	SOT-23	TLV803z	1
32.768KHz/POP	Crystal Oscillator	Y2	XTAL1	XTAL	1